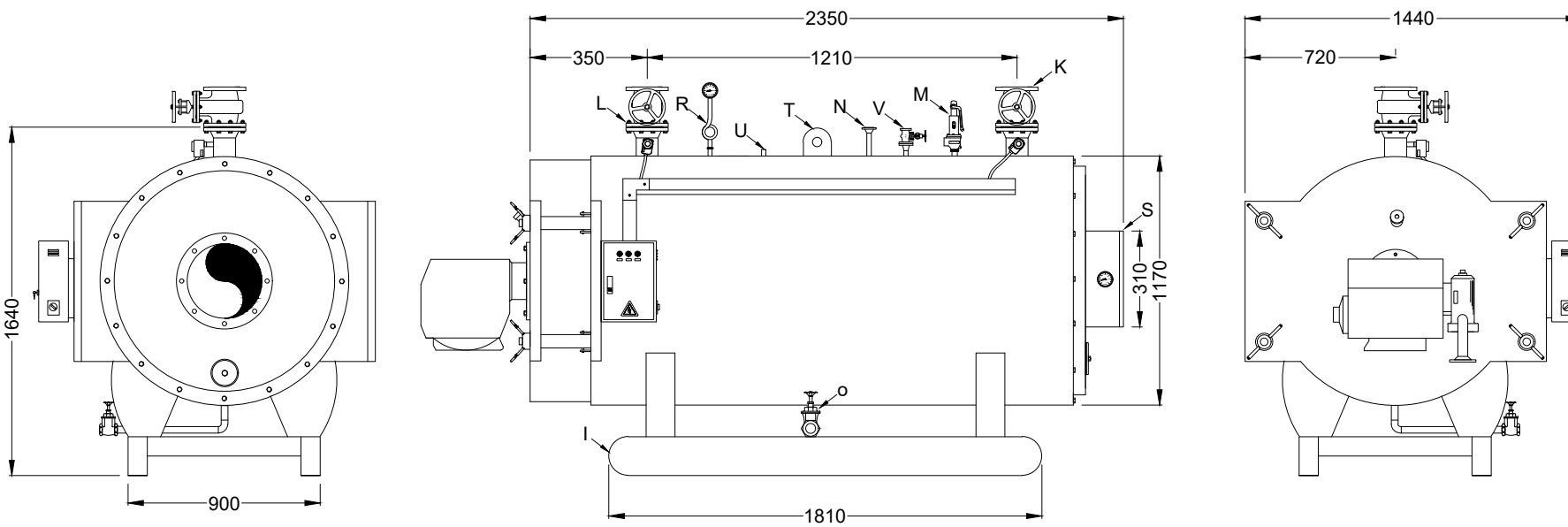


1 2 3 4 5 6 7 8 9 10 11 12

A  
B  
C  
D  
E  
F  
G  
H  
I  
J



TECHNICAL DATA		
DESIGN		
DESIGN STANDARD	BS/EN12953	
CAPACITY (kcal/hr)	500,000	
WORKING PRESSURE (bar)		
CORROSION ALLOWANCE	0.75 (mm)	
MATERIAL		
SHELL & FURNACE	17Mn-4 (DIN 17155)	
TUBE SHEETS	17Mn-4 (DIN 17155)	
FIRE TUBES	St 35.8 (DIN 17175)	
FLANGES	FORGED STEEL ASME B.16.5-150	
INSPECTION		
PENETRATION TEST	YES	
ULTRASONIC TEST	YES	
HYDROSTATIC TEST	YES	
CONNECTIONS SIZE		
WATER RETURN	K	2½"
WATER OUTLET	L	2½"
SAFETY	M	1"
EXPANSION	N	1"
DRAIN	O	1"
STACK Temp. Sensor	Q	½"
TEMPERATURE SENSOR	R	½"
STACK I.D	S	12"
CONTROLLER	U	½"
VENT	V	1"
HAND HOLE	T	80
SKID I-BEAM SIZE(IPN)	I	140
GENERAL NOTE		
1- ALL DIMENSIONS & ELEVATIONS ARE IN mm.		
2-THE MAP CONTAINS THE CONSTRUCTION TOLERANCES		
3-THE MAP PROVIDED IS NOT SCALED. SCALED MAP IS PROVIDED UPON REQUEST.		

TITLE:  
REVERSE FLAME BOILER DIMENSION DRAWING

DRAFTED	CHECKED	APPROVED	CONFIRMED	REV.	SCALE
				R02	NTS

VENDOR:



**PACKMAN**  
Industrial Group

